

PROTURA FROM THE AZORES AND MADEIRA ¹

By B. CONDÉ ² AND J. NOSEK ³

With one figure

The present paper deals with the Protura collected during April 1957 by the Lund University Expedition to the Azores and Madeira by Drs. Per Brinck and Erik Dahl. The group had been previously recorded from these islands (CONDÉ, 1957): one specimen from São Miguel (*Acerentulus* cf. *gerezianus* da Cunha) and another from Madeira (*Maderentulus madeirensis* Condé).

Fam. *Eosentomidae*

Gen. *Eosentomon* Berlese, 1909

Eosentomon forsslundi Ionescu, 1937

Locality.—Madeira. Serra de Água (No. 120), Power station, 600 m., grassy ground, under stone, 23.4.57 — 1♀.

Eosentomon sp.

Localities.—Madeira. Casa das Queimadas (No. 122), 880 m., Ravine, under stone, 24.4.57 — 2♀.—Ravine near Rib. das Cales (No. 127), 1200 m., 26.4.57 — 1♀.

1) Report No. 58 from the Lund University Expedition 1957 to the Azores and Madeira.

2) Faculté des Sciences de NANCY, Laboratoire de Zoologie approfondie, 30, rue Ste-Catherine. FRANCE.

3) Institute for Virology, Academy of Sciences, Mlynska dolina, BRATISLAVA 9. TCHECOSLOVAQUIE.

Fam. *Protentomidae*Gen. *Protentomon* Ewing, 1921*Protentomon maderensis* n. sp.

Fig. 1 A-G

Locality. — Madeira. Casa das Queimadas (No. 122), 880 m., ravine under stone, 24.4.57 — 2♀.

Length of body 500-560 μ , foretarsus without claw 28 μ .

Head. Mouthparts are of protentomine type. Canal of maxillary gland with a circular dilatation and a broad, sac-like dilatation with sharp proximo-lateral corner (Fig. 1 F.). The circular part of pseudoculus of the same length as its lever (Fig. 1 C, D, E), PR = 8.

Thorax. The foretarsus (Fig. 1 A, B) is characterized by extremely broad sensilla *a*. Dorsal sensilla t_1 missing. The sensillae *a*, *c*, *d* long, nearly the same length. The ratio of sensillae on exterior side of foretarsus *a* : *b* : *c* : *d* : *e* : *f* : *g* as 18 : 11 : 17 : 18,5 : 9 : 10,5 : 13 ; on interior side *a'* : *b'* : *c'* : as 11,5 : 14 : 11. The ratio of sensillae is very similar to *P. barandiarani* Cdé. but the position of sensillae *c* and *b'* is different. TR = 3.2, EU = 0.15.

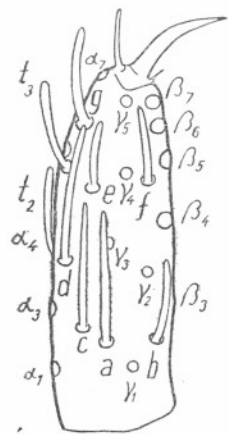
Abdomen. Abdominal legs I-III with 3, 3, 2 setae. The third leg with 2 unequally long setae (Fig. 1 G). The lid on terg. VIII without teeth. Chaetotaxy in Tuxen's system:

	I	II - III	IV - VI	VII	VIII	IX	X - XI	XII
terg.	$\frac{0}{12}$	$\frac{0}{12}$	$\frac{0}{12}$	$\frac{0}{16}$	$\frac{6}{14}$	12	8	9
stern.	$\frac{3}{2}$	$\frac{2}{3}$	$\frac{2}{6}$	$\frac{0}{6}$	4	4	4	8

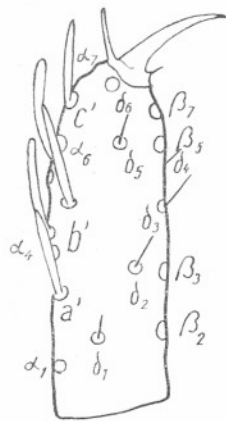
The squama genitalis ♀ shows some similarities to that of *barandiarani*.

Affinity. This species is closely related to *barandiarani* but differs from it in the form of pseudoculus, PR, extremely broad sensilla *a* and in body size.

Fig. 1. — *Protentomon maderensis* n. sp. ♀ from Casa das Queimadas, 880 m., 24.4.57: — A. Foretarsus in exterior view. — B. Foretarsus in interior view. — C, D, E. Pseudoculi (E from another specimen). — F. Canal of maxillary gland. — G. Abdominal legs I — III. (enlargement 100 × 10).



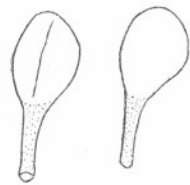
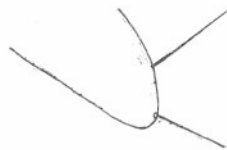
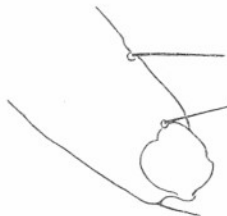
A



B



G



C



D



F



E

Fam. *Acerentomidae*Gen. *Maderentulus* Tuxen, 1963*Maderentulus maderensis* Condé, 1957

Localities.—Madeira. Caldeirão Verde near Queimadas, VIII. 1956 — larva II (Condé 1957 p. 145). — 1 km. E of Encumeada (No. 135), ca. 800 m., 28.4.57 — 1 ♀. — Casa das Queimadas (No. 122), 880 m., ravine, under stone, 24.4.57 — 9 ♀, 1 m. j. — Terreiro da Luta (No. 112), 850 m., stream, ravine under stones, 20.4.57 — 6 ♀ with a specimen of *Isotomodes productus* and 2 *Tullbergia* sp. — Ravine near Ribeira das Cales (No. 127), 1200 m., 26.4.57 — 11 ♀.

Azores. Flores. Ribeira d'Além da Fazenda (No. 108), under stone, 14.7.57 — 1 larva II.

REFERENCES

- Condé, B.:
1947. Description de quatre Protoures nouveaux du Sud-Ouest de la France. *Coll. Mus. Zool. Nancy*, 2, p. 5 - 12.
1957. Protoures et Diploures des Açores et de Madère. *Bull. Mus. Hist. nat.*, Paris, (2) 29, p. 145 - 147.
- Nosek, J.:
1970. The European Protura, their taxonomy, ecology and distribution with keys for determination (in press).
- Tuxen, S. L.:
1964. The Protura. A revision of the species of the world with keys for determination, *Hermann* Paris 360 pp.